

NEW RIVER L

IP68 IK08 CE F III SUB A A+ A++

TIPOLOGIA / TYPOLOGY

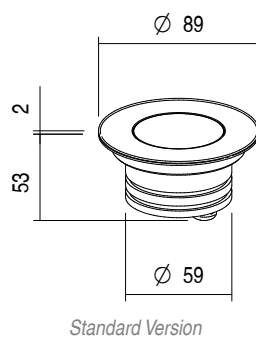
Incasso | Recessed

POSIZIONE INSTALLATIVA | INSTALLATION POSITION

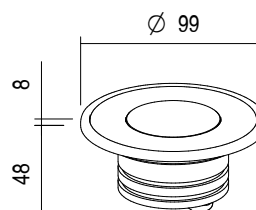
A terra, a parete, a immersione | Floor, wall, by immersion mounting

AMBIENTE INSTALLATIVO | INSTALLATION LOCATION

Esterno | Outdoor



Standard Version

Liner pool Version
with compensation trim

RIVER L

9W



kg 1,12

CARATTERISTICHE ELETTRICHE | ELECTRICAL FEATURES

POTENZA ASSORBITA POWER CONSUMPTION	9W
ALIMENTAZIONE POWER SUPPLY	24Vdc
ALIMENTATORE POWER SUPPLY UNIT	9W - 24Vdc non incluso not included
DIMMERAZIONE DIMMING	Dimmerabile Push, DMX, DALI, 1-10V, taglio di fase Push, DMX, DALI, 1-10V, phase cut dimmable
COLLEGAMENTO CONNECTION	Parallelo Parallel

CARATTERISTICHE ILLUMINOTECNICHE | LIGHTING FEATURES

COLORE LED LED COLOUR	Amber, 2200K, 2700K, 3000K, 4000K, Red, Green, Blue			
INDICE RESA CROMATICA CRI CRI	>80 (2200K, 2700K, 3000K, 4000K, 5000K)			
OTTICHE OPTICS	18°, 24°, 36°, 60°, ASYM, 20°x50°			
FLUSSO TOTALE REALE TOTAL OUTPUT LUMENS	36°	509lm (2700K)	566lm (3000K)	623lm (4000K)
DURATA MEDIA LED AVERAGE LED LIFE	50.000h L80 B10			

CARATTERISTICHE MECCANICHE | MECHANICAL FEATURES

PESO WEIGHT	kg 1,12
FINITURE FINISHES	Acciaio Steel
INSTALLAZIONE INSTALLATION	A incasso su muratura con cassaforma standard o IP68 (non inclusa) A incasso su piscina con telo con cassaforma IP68, flangia e controghiera (non inclusa) Recessed on brickwork with standard or IP68 housing box (not included) Recessed on liner pool with IP68 housing box, flange and compensation trim (not included)
MATERIALE MATERIAL	Corpo in acciaio inox AISI 316L, ghiera in acciaio inox AISI 316L, vetro temperato trasparente e lente in PMMA AISI 316L stainless steel body, AISI 316L stainless steel trim, transparent tempered glass and PMMA lens

CARATTERISTICHE GENERALI | GENERAL FEATURES


TEMPERATURA DI ESERCIZIO OPERATING TEMPERATURE	-10°C +45°C
GRADO DI PROTEZIONE INGRESS PROTECTION	IP68
GRADO DI RESISTENZA IMPACT RESISTANCE	IK08
GLOW WIRE TEST GLOW WIRE TEST	960°C
TEMPERATURA MASSIMA APPARECCHIO MAX. TEMPERATURE OF FIXTURE	40° @ Ta = 25°
CLASSE DI ISOLAMENTO APPLIANCE CLASS	III
CALPESTABILE WALKOVER	Sì Yes
CARRABILE DRIVE OVER	No
CAVI DI ALIMENTAZIONE POWER CABLES	Fornito con 3 m di cavo Provided with 3 m cable
SICUREZZA STANDARD STANDARD SAFETY	WP System
SICUREZZA FOTOBIOLOGICA PHOTOBIOLOGICAL SAFETY	GR1

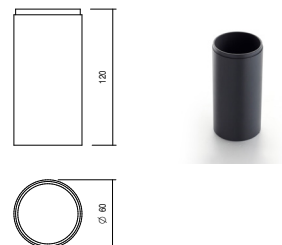
NEW

RIVER L

ACCESSORI | ACCESSORIES



standard

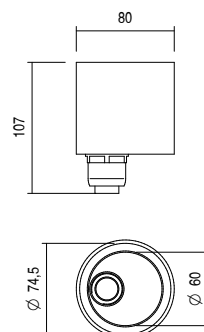
CODICE / CODE	CAE60
TIPOLOGIA / TYPOLOGY	Cassaforma Housing box  kg 0,10
MATERIALE MATERIAL	PVC



IP68

a scelta | to be chosen

CODICE / CODE	CA860
TIPOLOGIA / TYPOLOGY	Cassaforma Housing box   kg 0,10
MATERIALE MATERIAL	PVC



CODICE / CODE	KT860
TIPOLOGIA / TYPOLOGY	Kit Cassaforma, flangia e controghiera <i>Housing box, flange and compensation trim Kit</i>   kg 0,5
MATERIALE MATERIAL	Cassaforma Housingbox: PVC Flangia Flange: POM-C Controghiera Compensation trim: Acciaio inox AISI 316L Stainless Steel AISI 316L

